



DEVELOPMENT LAND AVAILABLE

150 Highway & 291 Highway (NEC), Lee's Summit, MO




SALE PRICE: \$10/SF | 3 ACRES

DEMOGRAPHICS

	1 mile	3 miles	5 miles
Estimated Population	5,704	26,081	68,173
Avg. Household Income	\$164,138	\$148,841	\$131,414

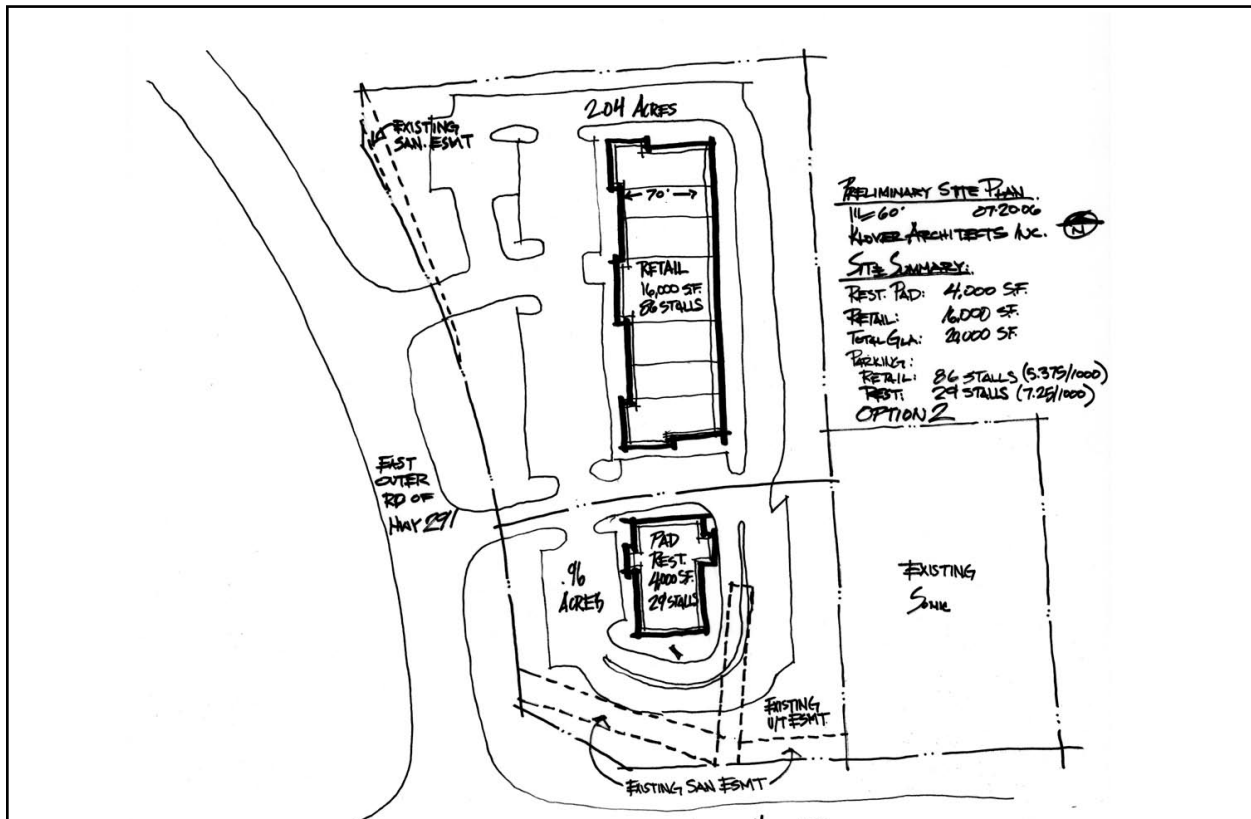
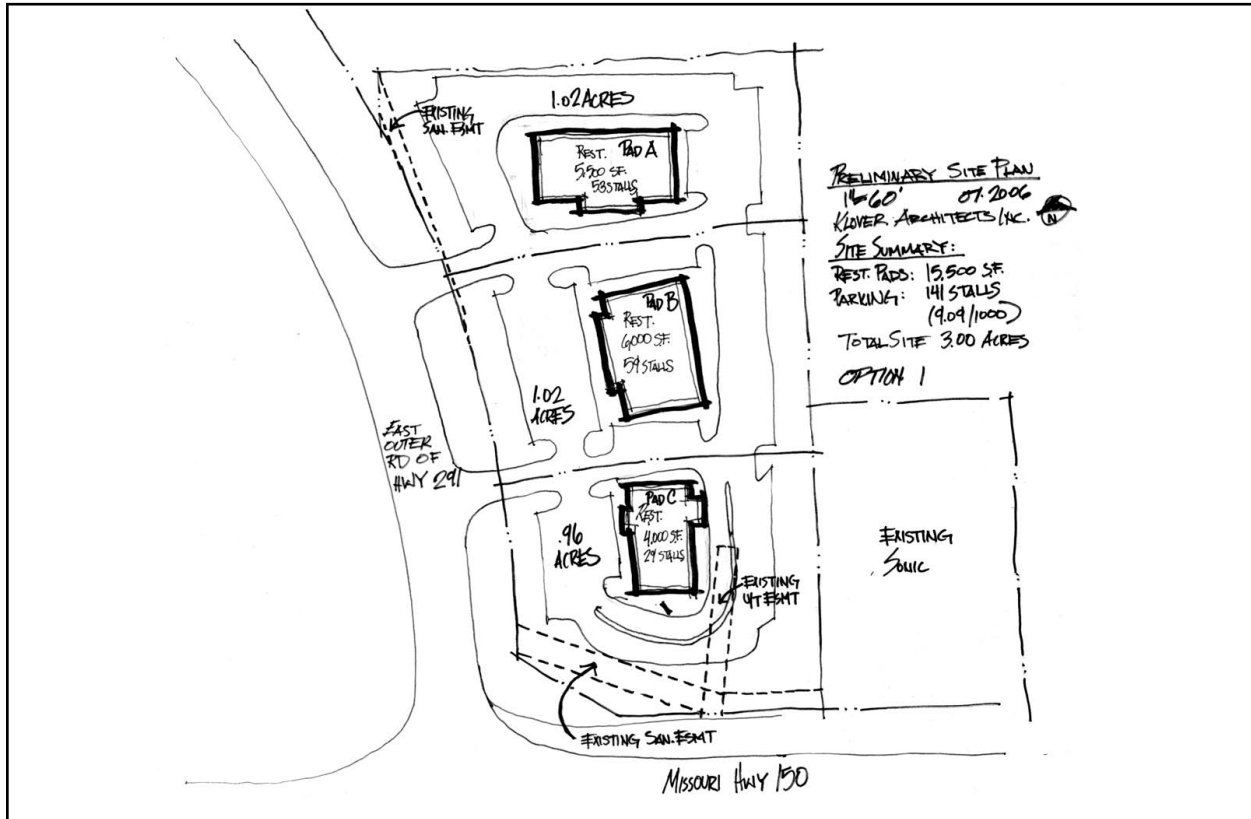
- Approximately 3 acres available
- Excellent site for restaurant, banks, and retail
- One of the fastest growing areas in Lee's Summit
- Tremendous visibility and frontage along Highway 150
- All utilities to site
- Master planned for commercial development
- Adjacent to planned major retail development to the north and south

 [CLICK HERE TO VIEW MORE LISTING INFORMATION](#)

For More Information Contact: *Exclusive Agent*
MARK MCCONAHAY | 816.412.7386 | mmcconahay@blockandco.com

All information furnished regarding property for sale or lease is from sources deemed reliable, but no warranty or representation is made as to the accuracy thereof and the same is subject to errors, omissions, changes of prices, rental or other conditions, prior sale or lease or withdrawal without notice.

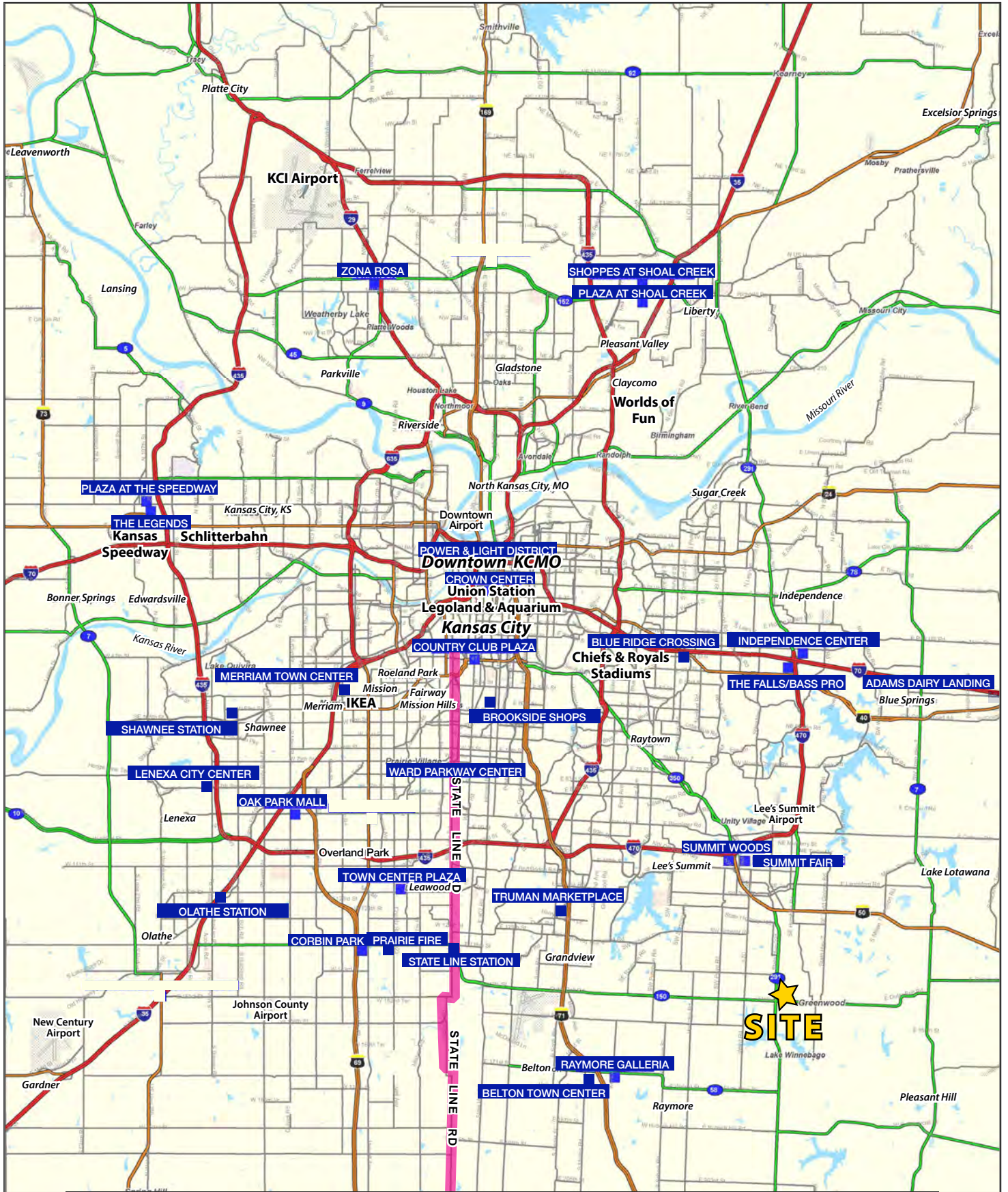
POTENTIAL DEVELOPMENT PLANS





DEVELOPMENT LAND AVAILABLE

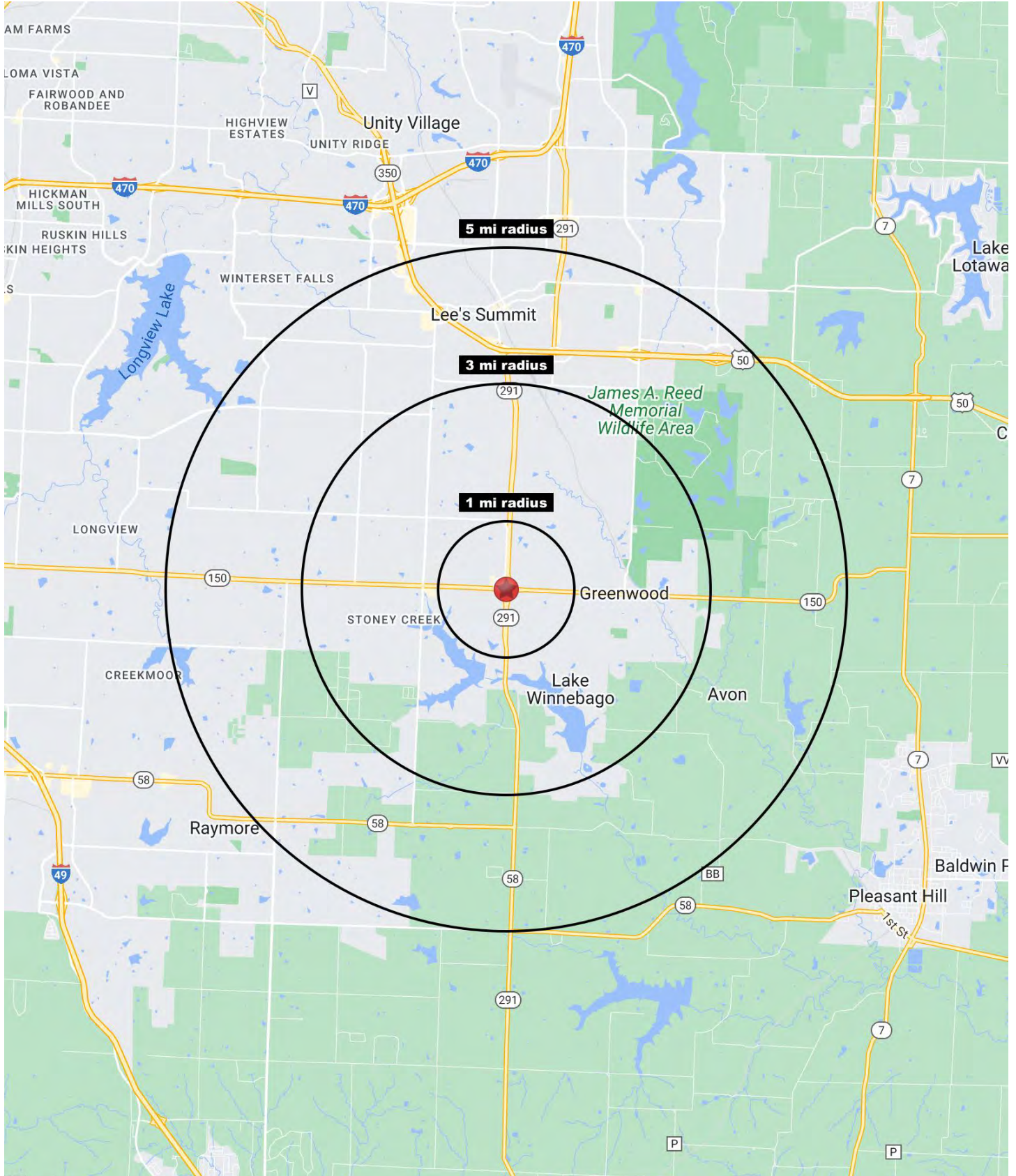
150 Highway & 291 Highway (NEC), Lee's Summit, MO





DEVELOPMENT LAND AVAILABLE

150 Highway & 291 Highway (NEC), Lee's Summit, MO





DEVELOPMENT LAND AVAILABLE

150 Highway & 291 Highway (NEC), Lee's Summit, MO

150 Highway & 291 Highway Lee's Summit, MO 64082	1 mi radius	3 mi radius	5 mi radius
Population			
2023 Estimated Population	5,704	26,081	68,173
2028 Projected Population	6,386	30,090	73,931
2020 Census Population	5,019	24,276	67,371
2010 Census Population	4,810	20,682	61,711
Projected Annual Growth 2023 to 2028	2.4%	3.1%	1.7%
Historical Annual Growth 2010 to 2023	1.4%	2.0%	0.8%
2023 Median Age	38.1	38.7	38.6
Households			
2023 Estimated Households	2,028	9,808	26,907
2028 Projected Households	2,220	11,138	28,655
2020 Census Households	1,780	8,736	25,454
2010 Census Households	1,680	7,349	23,219
Projected Annual Growth 2023 to 2028	1.9%	2.7%	1.3%
Historical Annual Growth 2010 to 2023	1.6%	2.6%	1.2%
Race and Ethnicity			
2023 Estimated White	80.0%	82.6%	81.9%
2023 Estimated Black or African American	11.1%	9.7%	9.6%
2023 Estimated Asian or Pacific Islander	2.6%	2.0%	1.8%
2023 Estimated American Indian or Native Alaskan	0.2%	0.2%	0.2%
2023 Estimated Other Races	6.0%	5.6%	6.4%
2023 Estimated Hispanic	5.5%	4.7%	5.4%
Income			
2023 Estimated Average Household Income	\$164,138	\$148,841	\$131,414
2023 Estimated Median Household Income	\$132,953	\$126,437	\$106,047
2023 Estimated Per Capita Income	\$58,395	\$55,988	\$51,888
Education (Age 25+)			
2023 Estimated Elementary (Grade Level 0 to 8)	1.2%	0.9%	1.2%
2023 Estimated Some High School (Grade Level 9 to 11)	1.6%	1.8%	2.3%
2023 Estimated High School Graduate	19.1%	20.3%	20.9%
2023 Estimated Some College	17.6%	19.9%	21.4%
2023 Estimated Associates Degree Only	8.1%	8.7%	9.9%
2023 Estimated Bachelors Degree Only	32.4%	30.7%	27.5%
2023 Estimated Graduate Degree	20.0%	17.7%	16.9%
Business			
2023 Estimated Total Businesses	243	705	2,417
2023 Estimated Total Employees	1,412	5,222	18,789
2023 Estimated Employee Population per Business	5.8	7.4	7.8
2023 Estimated Residential Population per Business	23.5	37.0	28.2

©2024, Sites USA, Chandler, Arizona, 480-491-1112 Demographic Source: Applied Geographic Solutions 11/2023, TIGER Geography - RS1

